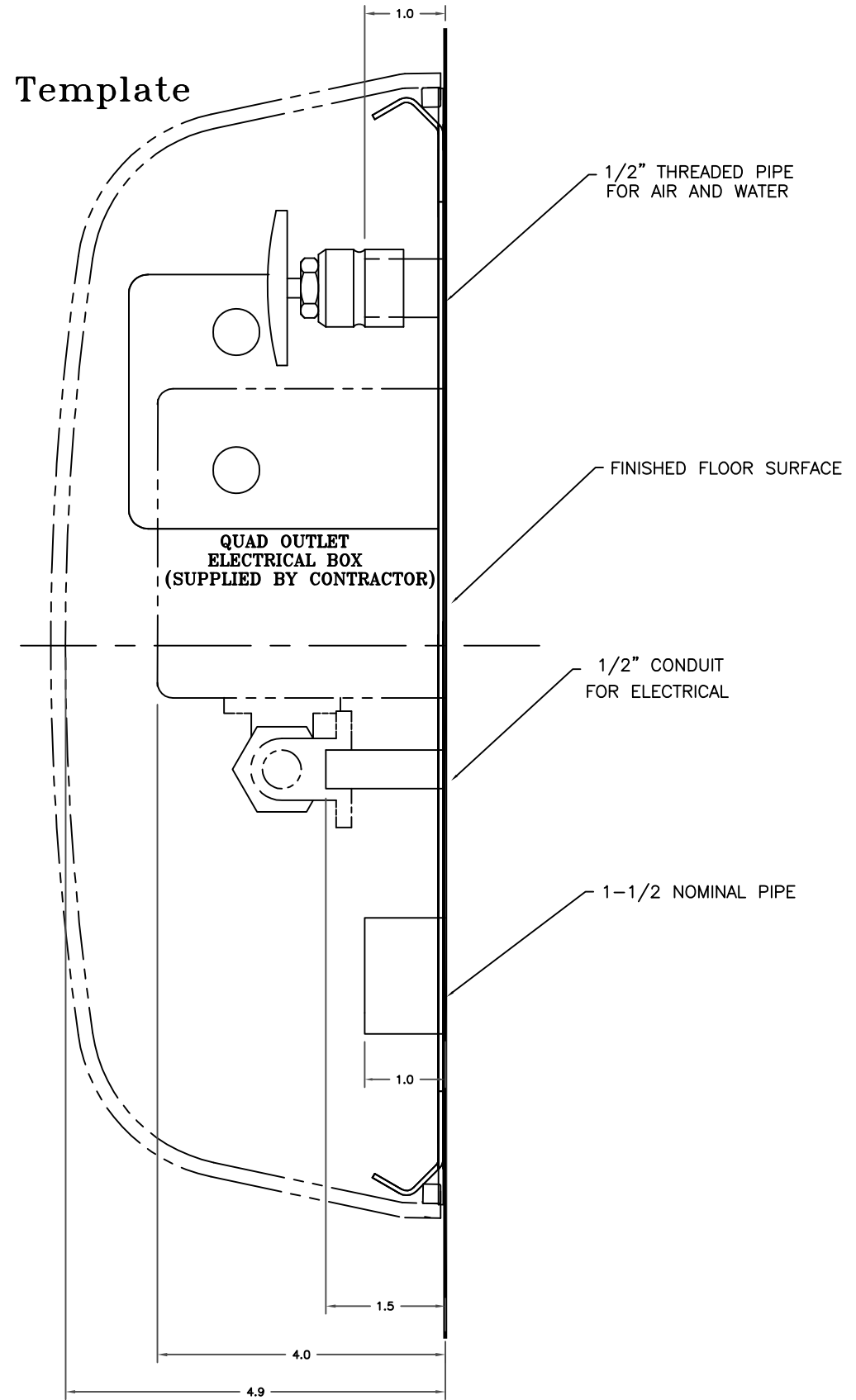
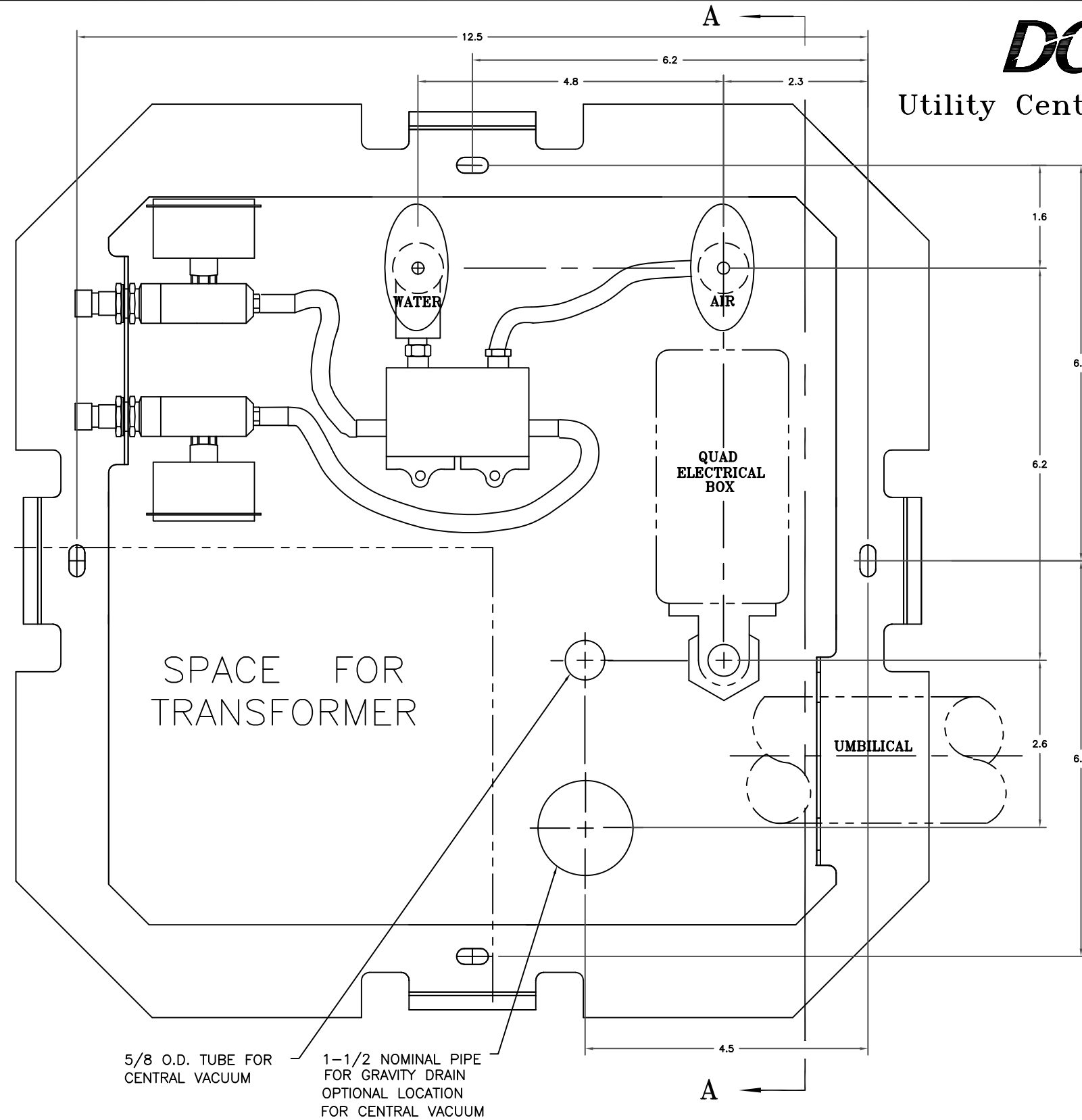




Utility Center Template



5/8 O.D. TUBE FOR CENTRAL VACUUM
1-1/2 NOMINAL PIPE FOR GRAVITY DRAIN
OPTIONAL LOCATION FOR CENTRAL VACUUM

NOTES:

1. LOCAL REGULATIONS PROVIDE THAT LICENSED PLUMBERS & ELECTRICIANS SHALL INSTALL UTILITIES
2. MAKE SURE ALL PLUMBING CONFORMS TO PREVAILING LOCAL CODES
3. PLUMBING CENTRAL VACUUM TO THE UTILITY CENTER SHOULD BE SPECIFIED BY THE CENTRAL VACUUM SUPPLIER AND TERMINATED IN UTILITY CENTER WITH 5/8 O.D. TUBE PERPENDICULAR TO THE FLOOR, SIMILAR TO THE DRAIN CONNECTION
4. GRAVITY DRAIN HAS 1-1/2 NOMINAL PIPE PROTRUDING 1" FROM FINISHED FLOOR
NOTE: PLACE TRAP IN LINE TO CONFORM WITH LOCAL CODES, SUPPLIED BY CONTRACTOR